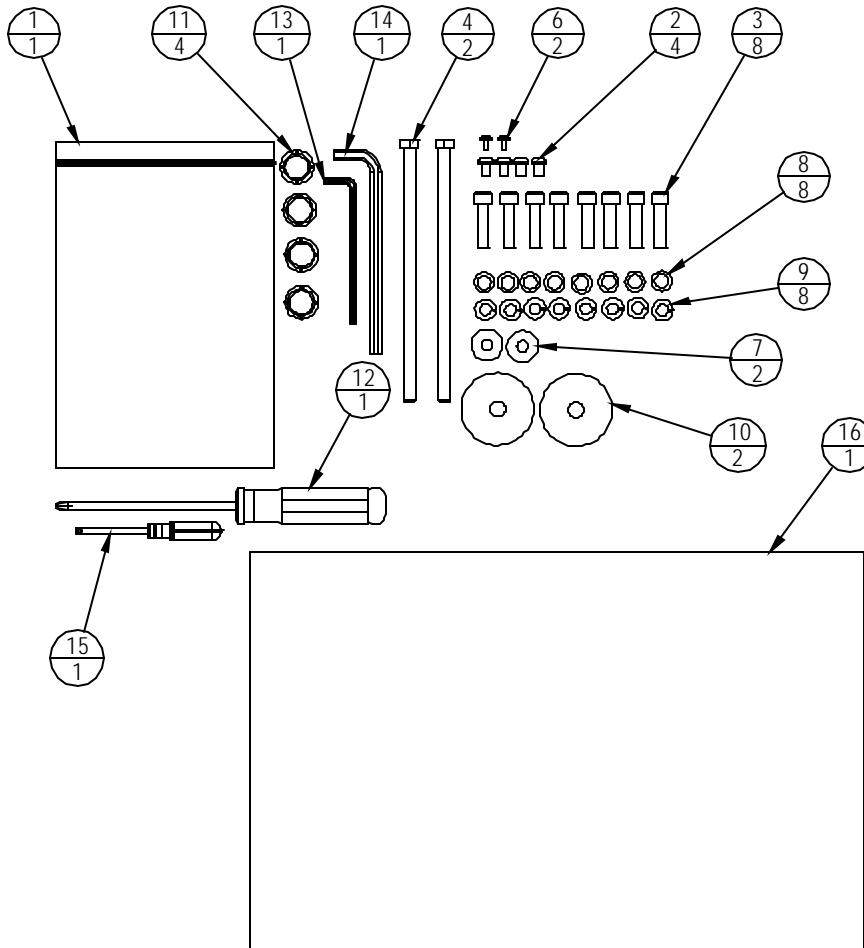


NOTES:

1. PUT ALL ITEMS INSIDE THE PLASTIC BAG (050-1874).

REVISIONS

REV.	DATE	DESCRIPTION	ECO	APPROVED
A	3/07/2007	PRODUCTION RELEASE	11558	VC
B	05-23-07	ADDED P/N 110-3407 AND 620-7715	11628	SJK
C	10-31-07	ADD P/N: 110-3402 AS A REFERENCE.	11757	RKL



ITEM NO.	PART NUMBER	DESCRIPTION	QTY.	NOTES
1	050-1874	BAG, PLASTIC, ZIP-LOCK, 6X9, 4 MIL	1	
2	110-0506	SCREW, 1/4-28X3/8 BHSS SS BLK OX	4	
3	110-3150	SCREW, 5/16-18 X 1.25, SHCS	8	
4	110-3162	SCREW, 5/16-18x7.0, HHC, HE, CS, ZP, G2	2	
5	110-3402	SCREW, M4X0.7X19L, PHT, PH, CS, BZ	10	REF.
6	110-3407	SCREW, M4x0.7x6L, PHM, PH, BO	2	
7	120-0480	WASHER, 5/16 ID, 7/8 OD, .087 THK	2	
8	120-0490	WASHER, 5/16 FLAT, 1/2" OD, .06 THICK	8	
9	120-0495	WASHER, 5/16, SPLIT LOCK	8	
10	120-3298	WASHER, FLAT, .437X2.00X.188	2	
11	140-3104	PLUG, 3/4" HOLE, BLK PLASTIC	4	
12	290-0010	SCREWDRIVER, PHILLIPS #2 X 5.0	1	
13	290-0040	HEX L-KEY, 5/32"	1	
14	290-0060	HEX L-KEY, 1/4" X 5.25" LOG	1	
15	290-0080	SCREWDRIVER, SMALL	1	
16	620-7715	INSTALL, QUICK, E-TR	1	

DOCUMENT STATUS:
RELEASE

MATERIAL

N/A

TOLERANCES UNLESS OTHERWISE SPECIFIED

X.XXX = ± .010
X.XX = ± .030
X.X = ± .050
X = ± .125

ANGLES = ± 2°
FRACTIONS = ± 1/32

UNISEN, INC. DBA



14410 Myford Road
Irvine CA 92606

FINISH

N/A

	INITIAL	DATE
DRAWN	VC	03-13-07
CHECKED		
APPROVED		
	U.O.M.	INCH

PART NO	715-3685	REV	C
TITLE KIT, TOOLS, INSTALLATION, E-TR			
SCALE: N/A	SHEET 1 OF 1	SHEET SIZE: A	

NOTICE OF PROPRIETARY INFORMATION
THIS DOCUMENT SHALL NOT BE REPRODUCED NOR SHALL THE INFORMATION CONTAINED HEREIN BE USED BY OR DISCLOSED TO OTHER EXCEPT AS EXPRESSLY AUTHORIZED BY UNISEN